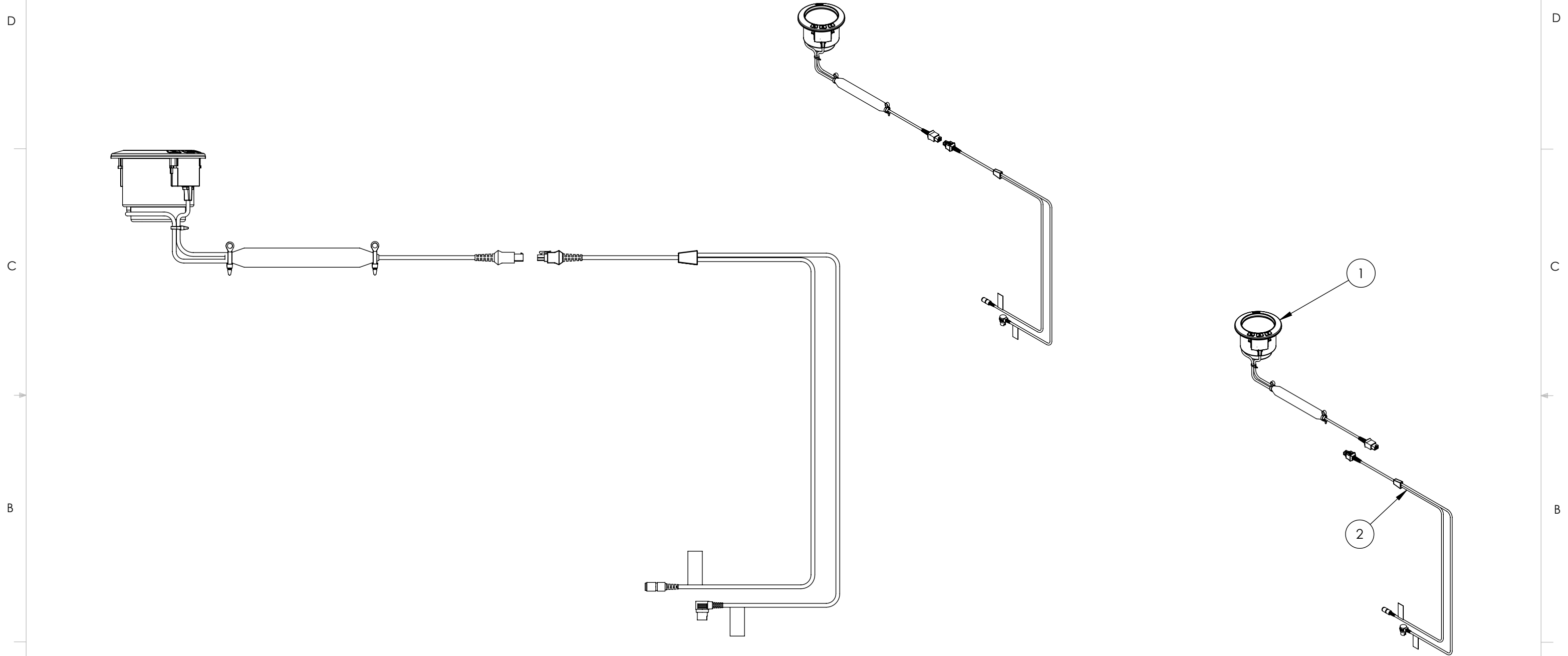


ITEM NO.	PART NUMBER	DESCRIPTION	QTY.
1	CHB R1ULBL 01 - CUP ASSY		1
2	CHB R1ULBL 01 - HARNESS ASSY		1

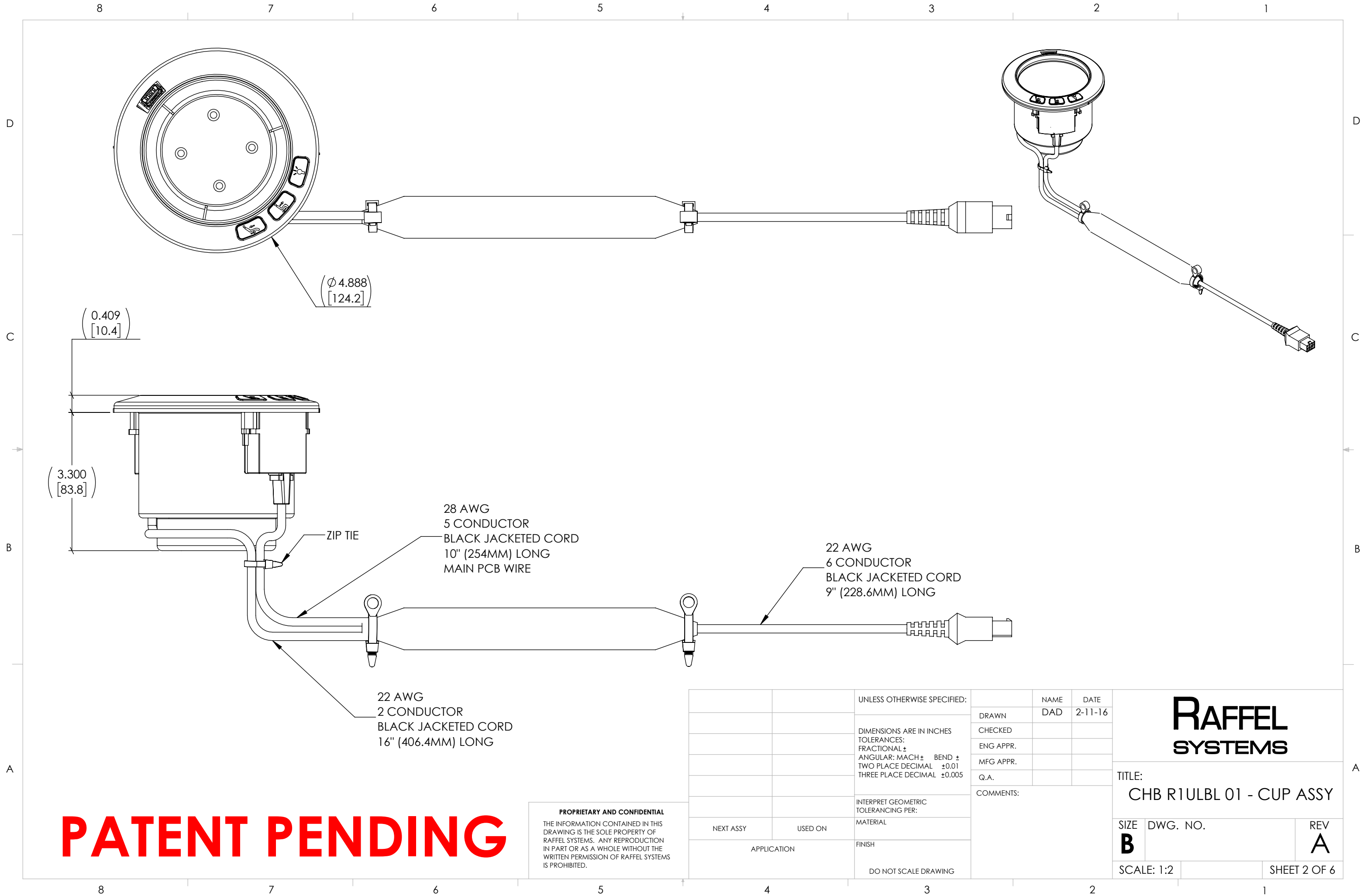
REVISIONS				
ZONE	REV.	DESCRIPTION	DATE	APPROVED
	B	CHANGED "SLAVE CUP" TO "ACCESSORY CUP"	5-29-18	MPR



		UNLESS OTHERWISE SPECIFIED:		NAME	DATE	<h1>RAFFEL SYSTEMS</h1>	
		DIMENSIONS ARE IN INCHES TOLERANCES: FRACTIONAL ± ANGULAR: MACH ± BEND ± TWO PLACE DECIMAL ±0.01 THREE PLACE DECIMAL ±0.005		DRAWN	DAD		2-11-16
		INTERPRET GEOMETRIC TOLERANCING PER:		CHECKED			
NEXT ASSY	USED ON	MATERIAL		ENG APPR.			
APPLICATION		FINISH		MFG APPR.			
		DO NOT SCALE DRAWING		Q.A.			
				COMMENTS:		TITLE:	
						CHB R1ULBL 01	
SIZE	DWG. NO.				REV		
<b>B</b>					<b>B</b>		
SCALE: 1:5			SHEET 1 OF 6				

**PATENT PENDING**

**PROPRIETARY AND CONFIDENTIAL**  
THE INFORMATION CONTAINED IN THIS DRAWING IS THE SOLE PROPERTY OF RAFFEL SYSTEMS. ANY REPRODUCTION IN PART OR AS A WHOLE WITHOUT THE WRITTEN PERMISSION OF RAFFEL SYSTEMS IS PROHIBITED.



( $\varnothing$  4.888)  
[124.2]

(0.409)  
[10.4]

(3.300)  
[83.8]

ZIP TIE

28 AWG  
5 CONDUCTOR  
BLACK JACKETED CORD  
10" (254MM) LONG  
MAIN PCB WIRE

22 AWG  
6 CONDUCTOR  
BLACK JACKETED CORD  
9" (228.6MM) LONG

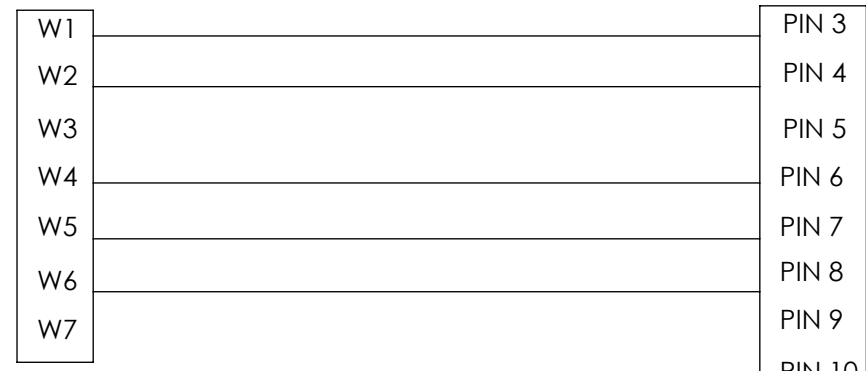
22 AWG  
2 CONDUCTOR  
BLACK JACKETED CORD  
16" (406.4MM) LONG

**PATENT PENDING**

**PROPRIETARY AND CONFIDENTIAL**  
THE INFORMATION CONTAINED IN THIS DRAWING IS THE SOLE PROPERTY OF RAFFEL SYSTEMS. ANY REPRODUCTION IN PART OR AS A WHOLE WITHOUT THE WRITTEN PERMISSION OF RAFFEL SYSTEMS IS PROHIBITED.

		UNLESS OTHERWISE SPECIFIED:		NAME	DATE
		DIMENSIONS ARE IN INCHES TOLERANCES: FRACTIONAL $\pm$ ANGULAR: MACH $\pm$ BEND $\pm$ TWO PLACE DECIMAL $\pm$ 0.01 THREE PLACE DECIMAL $\pm$ 0.005		DRAWN	DAD 2-11-16
		INTERPRET GEOMETRIC TOLERANCING PER:		CHECKED	
NEXT ASSY	USED ON	MATERIAL		ENG APPR.	
APPLICATION		FINISH		MFG APPR.	
		DO NOT SCALE DRAWING		Q.A.	
				COMMENTS:	
				<p><b>RAFFEL SYSTEMS</b></p> <p>TITLE: CHB R1ULBL 01 - CUP ASSY</p>	
SIZE	DWG. NO.		REV		
<b>B</b>			<b>A</b>		
SCALE: 1:2			SHEET 2 OF 6		

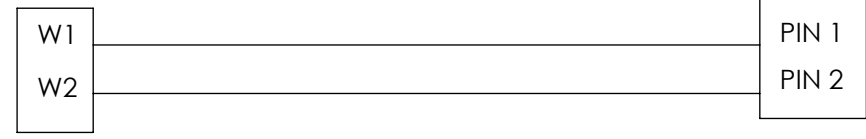
CHB R2LBL 01 PCB



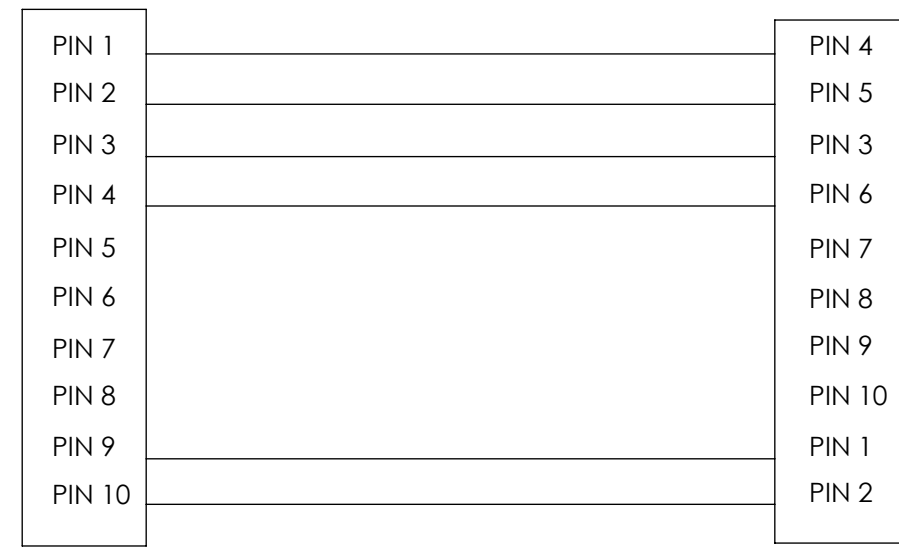
HOUSING:  
HONGXING ELECTRICAL HX25002-11Y  
TERMINAL:  
HONGXING ELECTRICAL HX25002-PT

PLUG INTO P2 ON:  
JCT R2LBL 01 - PCB

CHB R2ULBL 01 USB PCB



10 PIN CONNECTOR  
HOUSING: HX 39600-10Y  
TERMINAL: HX 39600-PT  
  
PLUG INTO P1 ON:  
JCT R2LBL 01 - PCB



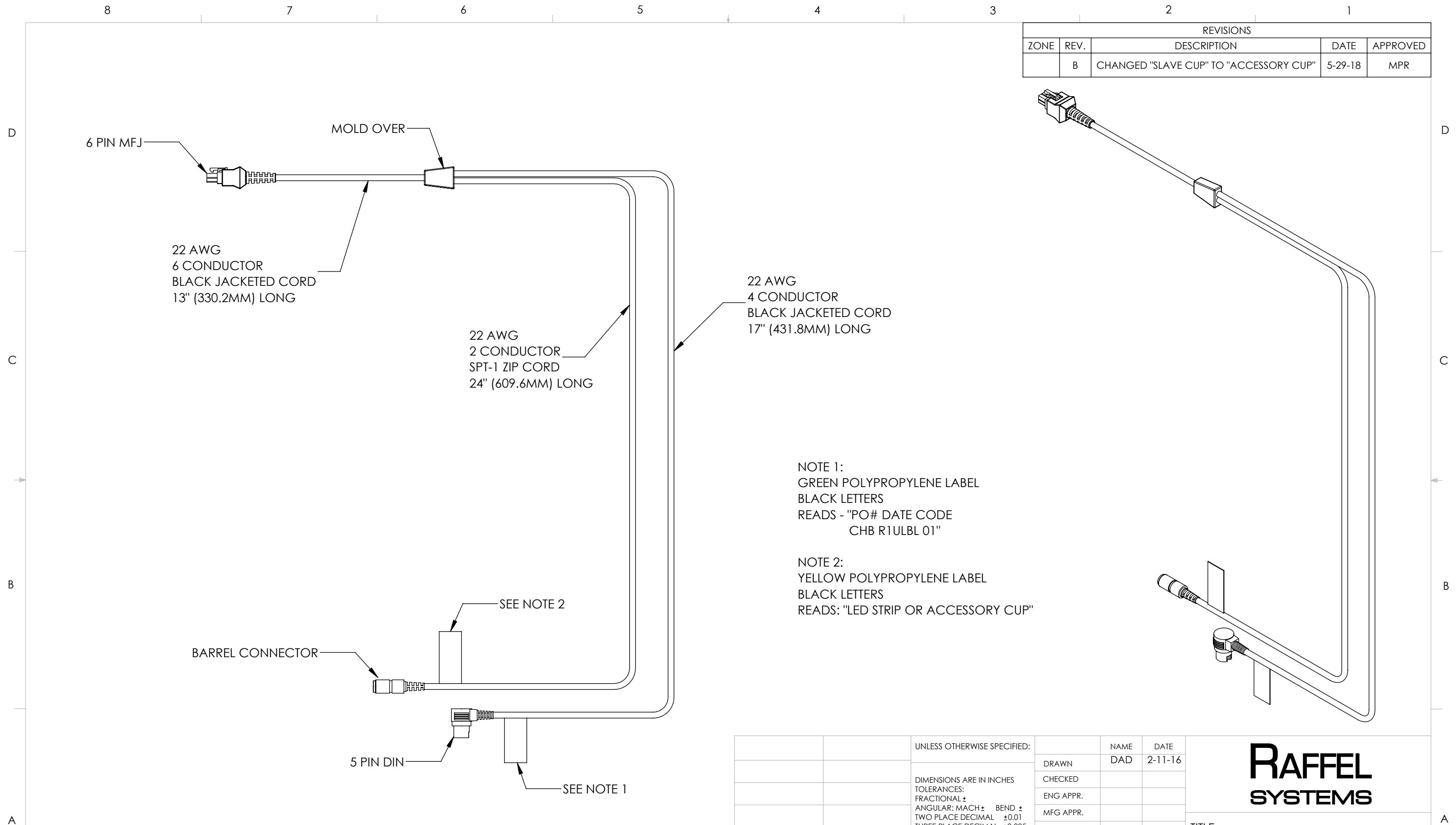
6 PIN MFJ DUAL ROW PLUG  
HOUSING:  
MOLEX PN: 39012061  
TERMINAL:  
MOLEX PN: 39000040

**PATENT PENDING**

**PROPRIETARY AND CONFIDENTIAL**  
THE INFORMATION CONTAINED IN THIS DRAWING IS THE SOLE PROPERTY OF RAFFEL SYSTEMS. ANY REPRODUCTION IN PART OR AS A WHOLE WITHOUT THE WRITTEN PERMISSION OF RAFFEL SYSTEMS IS PROHIBITED.

		UNLESS OTHERWISE SPECIFIED:		NAME	DATE
		DIMENSIONS ARE IN INCHES TOLERANCES: FRACTIONAL ± ANGULAR: MACH ± BEND ± TWO PLACE DECIMAL ±0.01 THREE PLACE DECIMAL ±0.005		DRAWN	DAD 2-11-16
		INTERPRET GEOMETRIC TOLERANCING PER:		CHECKED	
NEXT ASSY	USED ON	MATERIAL		ENG APPR.	
APPLICATION		FINISH		MFG APPR.	
		DO NOT SCALE DRAWING		Q.A.	
				COMMENTS:	
				TITLE: CHB R1ULBL 01 CUP ASSY WIRE DIAGRAM	
SIZE	DWG. NO.			REV	
<b>B</b>				<b>A</b>	
SCALE: 1:1			SHEET 3 OF 6		

REVISIONS				
ZONE	REV.	DESCRIPTION	DATE	APPROVED
	B	CHANGED "SLAVE CUP" TO "ACCESSORY CUP"	5-29-18	MPR



NOTE 1:  
GREEN POLYPROPYLENE LABEL  
BLACK LETTERS  
READS - "PO# DATE CODE  
CHB R1ULBL 01"

NOTE 2:  
YELLOW POLYPROPYLENE LABEL  
BLACK LETTERS  
READS: "LED STRIP OR ACCESSORY CUP"

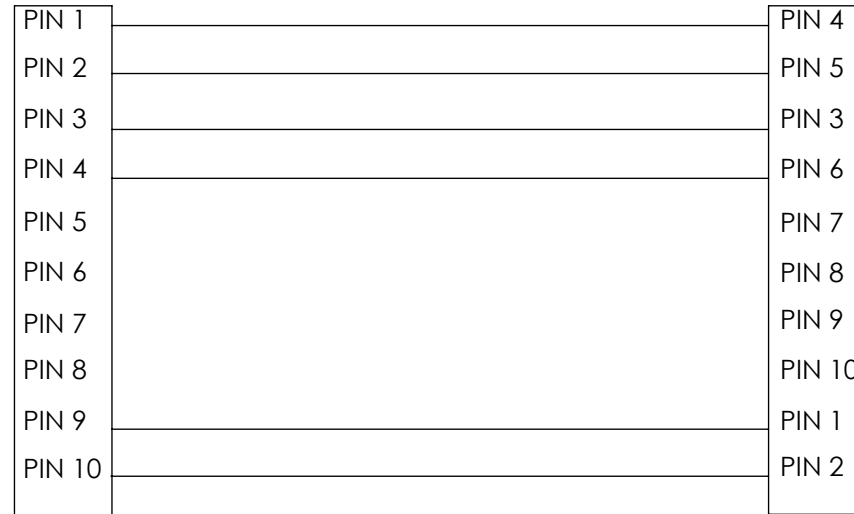
**PATENT PENDING**

**PROPRIETARY AND CONFIDENTIAL**  
THE INFORMATION CONTAINED IN THIS DRAWING IS THE SOLE PROPERTY OF RAFFEL SYSTEMS. ANY REPRODUCTION IN PART OR AS A WHOLE WITHOUT THE WRITTEN PERMISSION OF RAFFEL SYSTEMS IS PROHIBITED.

		UNLESS OTHERWISE SPECIFIED:	NAME	DATE		
		DIMENSIONS ARE IN INCHES TOLERANCES: FRACTIONAL ± ANGULAR: MACH ± BEND ± TWO PLACE DECIMAL ±0.01 THREE PLACE DECIMAL ±0.005	DRAWN	DAD		2-11-16
			CHECKED			
			ENG APPR.			
			MFG APPR.			
			Q.A.			
		INTERPRET GEOMETRIC TOLERANCING PER:	COMMENTS:		TITLE: CHB R1ULBL 01 - HARNESS ASSY	
NEXT ASSY	USED ON	MATERIAL			SIZE <b>B</b>	
APPLICATION		FINISH			DWG. NO.	
		DO NOT SCALE DRAWING			REV <b>B</b>	
					SCALE: 1:3	
					SHEET 4 OF 6	

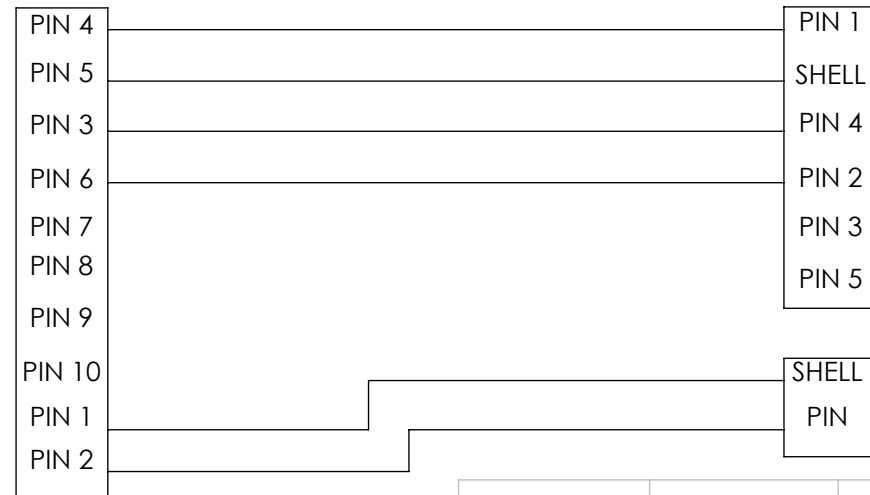
10 PIN CONNECTOR  
HOUSING: HX 39600-10Y  
TERMINAL: HX 39600-PT

PLUG INTO P1 ON:  
JCT R2LBL 01 - PCB



6 PIN MFJ DUAL ROW PLUG  
HOUSING:  
MOLEX PN: 39012061  
TERMINAL:  
MOLEX PN: 39000040

6 PIN MFJ DUAL ROW RECEPTACLE  
HOUSING:  
MOLEX PN: 0039012060  
TERMINAL:  
MOLEX PN: 0039000038



5 PIN DIN  
CONNECTOR

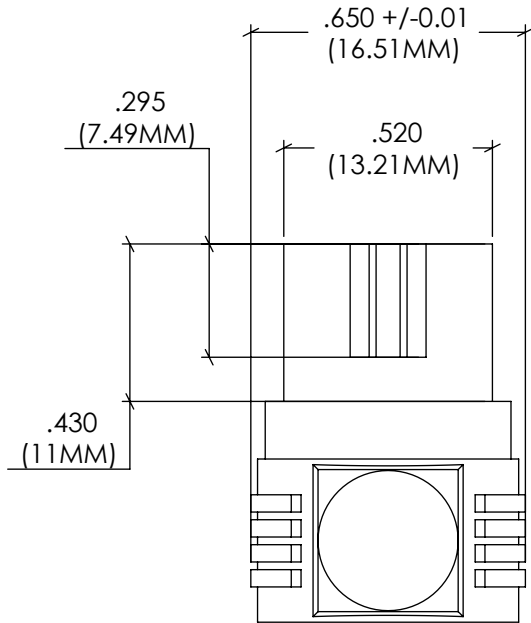
2.1 X 5.5MM  
MALE BARREL

**PATENT PENDING**

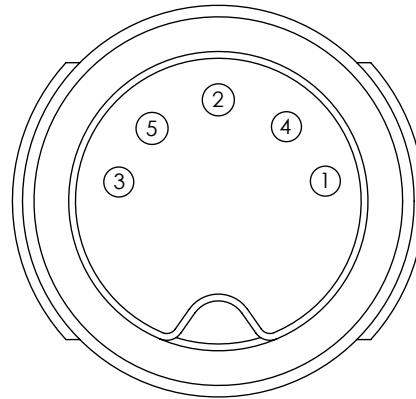
**PROPRIETARY AND CONFIDENTIAL**  
THE INFORMATION CONTAINED IN THIS  
DRAWING IS THE SOLE PROPERTY OF  
RAFFEL SYSTEMS. ANY REPRODUCTION  
IN PART OR AS A WHOLE WITHOUT THE  
WRITTEN PERMISSION OF RAFFEL SYSTEMS  
IS PROHIBITED.

		UNLESS OTHERWISE SPECIFIED:		NAME	DATE	<h1>RAFFEL SYSTEMS</h1>	
		DIMENSIONS ARE IN INCHES TOLERANCES: FRACTIONAL ± ANGULAR: MACH ± BEND ± TWO PLACE DECIMAL ±0.01 THREE PLACE DECIMAL ±0.005		DRAWN	DAD		2-11-16
				CHECKED			
				ENG APPR.			
				MFG APPR.			
				Q.A.			
				COMMENTS:		TITLE: CHB R1ULBL 01 JCT ASSY WIRING DIAGRAM	
NEXT ASSY		USED ON		MATERIAL		SIZE: <b>B</b>	
APPLICATION		FINISH		DO NOT SCALE DRAWING		DWG. NO.	
						REV <b>A</b>	
						SCALE: 1:1	
						SHEET 5 OF 6	

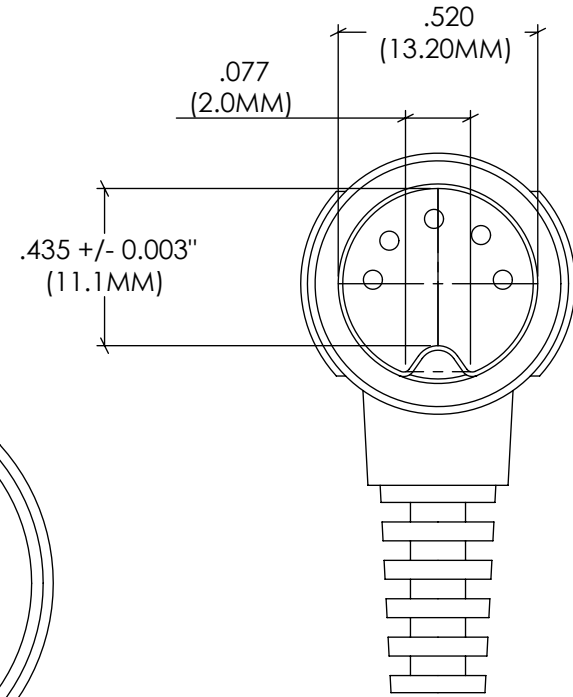
# PATENT PENDING



BOTTOM VIEW



PIN LAYOUT  
DETAIL VIEW



FRONT VIEW

**PROPRIETARY AND CONFIDENTIAL**  
THE INFORMATION CONTAINED IN THIS DRAWING IS THE SOLE PROPERTY OF RAFFEL SYSTEMS, LLC. ANY REPRODUCTION IN PART OR AS A WHOLE WITHOUT THE WRITTEN PERMISSION OF RAFFEL SYSTEMS, LLC. IS PROHIBITED.

		UNLESS OTHERWISE SPECIFIED:		NAME	DATE
		DIMENSIONS ARE IN INCHES	DRAWN	DAD	12-13-13
		TOLERANCES:	CHECKED		
		FRACTIONAL ±	ENG APPR.		
		ANGULAR: MACH ± BEND ±	MFG APPR.		
		TWO PLACE DECIMAL ±	Q.A.		
		THREE PLACE DECIMAL ±0.001	COMMENTS:		
		INTERPRET GEOMETRIC TOLERANCING PER:			
		MATERIAL			
NEXT ASSY	USED ON	FINISH			
APPLICATION		DO NOT SCALE DRAWING			

**RAFFEL  
SYSTEMS**

TITLE:  
**5 PIN DIN MALE  
STANDARDS**

SIZE **A** DWG. NO. REV

SCALE: NA SHEET 6 OF 6